

## Compact yet Rugged SPP-R200

## Specifications for the SPP-R200

### OPTIONS >>

#### Cigar Lighter Charger



SPP-R200 is easily charged using the cigar lighter charger on the vehicle for road warriors

#### Cradle



This optional battery cradle allows users to charge their spare battery while the printer is in a use. Charge each Lithium-ion battery at a time in approximately 2.5 hours

#### Spare Battery



With a spare Lithium-ion battery, you can always be assured that SPP-R200 will be ready for you on the road

#### Leather Case



Equip your mobile printer for maximum protection in tough outdoor usage and to keep hands free

#### Serial/USB Interface Cable



For users who prefer to use the mobile printer with interface cable, optional Serial/USB cable is available

Print	<p><b>Print method</b> : Direct thermal</p> <p><b>Print speed</b> : 80 mm/sec</p> <p><b>Resolution</b> : 203 dpi ( 8 dots/mm)</p> <p><b>Paper supply method</b> : Easy paper loading</p> <p><b>Character size</b> : Font A : 12 x 24 , Font B : 9 X 24</p> <p><b>Character per line</b> : Font A : 32, Font B : 42</p> <p><b>Character sets</b> : Alphanumeric character : 95</p> <p><b>Extended graphic</b> : 128 x 20 pages (included in the standard firmware)</p> <p><b>International character</b> : 32</p> <p><b>Barcodes</b> 1D : Codabar, ITF, UPC A, UPC B, CODE 39, CODE 93, Code 128, EAN 8, EAN 13, EAN 18,</p> <p>2D : QR Code, Maxi Code, PDF417, Data Matrix</p> <p><b>Drivers</b> : WinCE 4.2, WinCE 5.0 (Customized Driver Supported)</p> <p><b>Sensor</b> : Paper end sensor, Rear cover open switch</p> <p><b>Cutter type</b> : Manual cutter</p>
Paper Roll	<p><b>Paper type</b> : Thermal paper</p> <p><b>Width</b> : 58 ± 0.5 mm (2.28" ± 0.2")</p> <p><b>Diameter</b> : Max. ø40 mm (1.57")</p>
Reliability	<p><b>TPH</b> : 50 km</p> <p><b>Battery</b> : 500 cycles rechargeable</p>
Connectivity	<b>Interface</b> : Serial/USB, Bluetooth
Battery charger	<p><b>Input</b> : Voltage - 100 ~ 250 VAC / Current - 1.0A (Max. at 110VA)</p> <p><b>Output</b> : Voltage - 8.4 VDC / Current - 0.8A</p>
Battery	<p><b>Type</b> : Lithium-Ion</p> <p><b>Output</b> : Voltage - 7.4 VDC / Capacity - 1200 mAh</p>
Dimension	<b>Printer</b> : 79.5 mm x 126.7 mm x 43.6 mm (3.1" x 5.0" x 1.7")
Weight	<p><b>Printer</b> : 184g (0.41lbs)</p> <p><b>Printer+battery</b> : 236g (0.52lbs)</p> <p><b>Printer+battery+paper roll</b> : 293g (0.65lbs)</p> <p><b>Shipping</b> : Approximately 680g (1.5lbs)</p>
Options	<p><b>Default (Included in box)</b> : Battery, Battery Charger, Belt Strap, Installation CD, Roll Paper</p> <p><b>Optional</b> : Spare Battery, Battery Cradle, Cigar Lighter Charger, Leather Case, Serial/USB Interface Cable</p>

**BIXOLON Samsung Mobile Printer SPP-R200, a small and lightweight mobile receipt printer.** A prudent choice for any mobile receipt printing application where you need fast, on-demand printing with speeds up to 80mm per second (3.15inches/sec). SPP-R200 also utilizes a long-life Lithium-ion battery with a 6.2 hour continuous operation life (stand-by : 14 hours, approx. 10 ø40mm rolls per battery charge). The magnetic card reader integrated into the printer allows credit cards to be processed immediately at the point of transaction, increasing customers' sense of security since the credit card does not leave their sight.

## Compact yet Rugged BIXOLON Samsung Mobile Printer SPP-R200

a Better Solution  
for your Business™

### SPP-R200 HIGHLIGHTS

- Rugged design and Small size**
  - Damage-resistance to multiple drops of up to 1.2 meters (4 feet)
  - Rubber over-molding
- Faster printing speed up to 80mm/sec(3.15 inch/sec)**
- Long lasting Lithium-ion battery (7.4V, 1200mAh)**
  - Operation : 6.2 hours (approx. 10 ø40mm rolls per battery charge)
  - Stand-by : 14 hours
- Customer oriented software tools**
  - Firmware download ( with cable or without cable)
  - Bluetooth firmware download support
  - Font download (Virtual Memory Switch Managr)
  - NV Image tool (Logo download)
- Easy-to-use**
  - One touch cover open and easy paper loading
  - 4 step battery indicator and connectivity status

## Compact yet Rugged SPP-R200



BIXOLON Samsung Mobile Printer SPP-R200 is a small, lightweight mobile receipt printer that brings user convenience & functionality to any mobile receipt printing applications such as ;

- Mobile POS
- Retail
- Hospitality
- Parking Citations
- Deliveries
- Onboard Transportation
- Field Repairs / Installation
- Warehouse / Logistics
- Utility billing / Meter Reading

## Main Features for the SPP-R200

### Rugged Design and Small Size

Uniquely designed for harsh outdoor environments, and handheld size the SPP-R200 is ideal for printing delivery receipts and invoices on the go.

#### Rugged Design

- Damage-resistance to multiple drops of up to 1.2 meters (4 feet)
- Damage-resistance material for printer housing
- Rubber over-molding to prevent from damage to weak points of the printer



Damage-resistance material  
Rubber over-molding

#### Small and lightweight design

- 79.5mm (W) x 126.7mm (L) x 43.6mm (H)  
(3.1" x 5.0" x 1.7")
- 0.65lbs (293g) including paper roll, battery



Handheld size

### Fast Printing Speed

To speed up customer transactions without sacrificing performance, the SPP-R200 prints texts and graphics at a consistent speed of 80mm per second. Reduced data processing time has been achieved by utilizing a more powerful CPU; increases in performance have been made by upgrading mechanical components and optimizing software.

- CPU : 32 bit
- RAM : 64 Mbit (SDRAM)
- Flash Memory : 16 Mbit (NV Image: 256KByte)
- Buffer : 128 KByte

### Long lasting Lithium-ion Battery

SPP-R200 utilizes a long-life lithium-ion battery with a 6.2 hours operation life (approx. 10 ø40mm rolls per battery charge, Stand-by : 14 hours) of 203 dpi (8dots/mm) thermal printing on a single charger.

#### Lithium-ion battery (7.4V 1,200mAh)

- Operation hours: 6.2 hours (approx. 10 ø40mm of rolls printing/charge)
- Standby hours: 14 hours

#### Battery status indicator

- (Low battery alarm support)
- 4 step battery indicator and connectivity status



Full (3 LEDs) 2 LEDs 1 LED Low battery alarm

#### Smart battery management

(Monitors battery for longer life and performance)

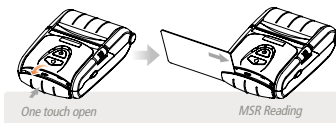
- Sleep or Auto Power OFF Mode
- Sleep or Auto Power OFF time set by Virtual Memory Switch Manager

### Magnetic Strip Reader (MSR)

The Magnetic card reader integrated into the printer allows credit cards to be processed immediately at the point of transaction, increasing the customers' sense of security since the credit card does not leave their sight.

- One touch open (Patent applied)
- All track conditions supported by VMSM

Single track (1st or 2nd or 3rd) or  
Dual track (1st/2nd track or 2nd/3rd track)



One touch open MSR Reading

## Compact yet Rugged SPP-R200

Intuitive wireless capability, long battery life and handheld size that wears perfectly on a belt strap or leather case, the Compact yet Rugged, BIXOLON Samsung Mobile Printer SPP-R200 fully satisfies the anytime and anywhere demands of today's mobile commerce.



### All you need in one package!

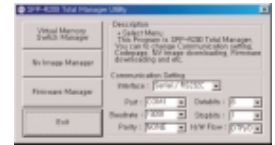
- An AC adapter(Charger) with the power code
- A long lasting Lithium-ion battery
- Portable device, Belt Strap, suited for outdoor usage
- A roll of receipt paper (Thermal) to get started printing right away
- A quick-reference guide sheet
- An installation CD including the drivers, all software programs, test samples and the user's guide book

## Main Features for the SPP-R200

### Customer Oriented Software Tools

The SPP-R200 is supported by a rich pool of utility software. The Firmware download tool, NV image tool and Virtual Memory Switch Manager (VMSM) are available with more software being added in the future.

These new customer oriented utilities enable the users to directly access logo download, code page selection, firmware download and the other printer settings more easily and with no Hardware setting changes.



Total Management Utility

#### NV Image Manager

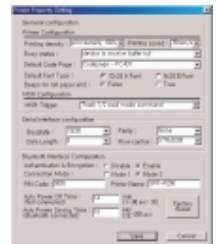
- For Logo download (Update available)

#### Firmware Manager for printer & Bluetooth interface

- For firmware download (Update available)

#### Virtual Memory Switch Manager (VMSM) to desired settings

- User-defined fonts type and size
- Default code page
- Printing Density (Value range: 80 ~ 130%)
- Printing Speed (50mm/sec, 80mm/sec)
- Beeps for Roll Paper End
- MSR Trigger
- Auto Power Off Time (0 ~ 90 minutes)
- Auto Power Saving Time (10 ~ 255 seconds)
- Default Interface
- Authentication Encryption
- Bluetooth connection Mode
- PIN Code and Printer Name (Max value is 12 digit or alphabet)



### Other value-added features

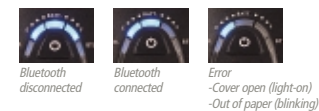
#### Various Interface Communication & Interface Capabilities

- Serial (RS-232C), USB
- Bluetooth with high communication speed (115,200 bps)



Serial / USB Cable

#### Intuitive LEDs



Bluetooth disconnected Bluetooth connected Error -Cover open (light-on) -Out of paper (blinking)

#### One touch cover open & Easy paper loading



One Touch Cover Open Easy Paper Loading

#### Portable device suited for outdoor usage

- Belt Strap (Default)
- Leather Case (Optional)

#### 20 code pages included in the standard firmware

(no update necessary, to be set by VMSM)

#### 203 dpi printing model available

#### WinCE 4.2, WinCE 5.0

(Customized Driver Supported)